

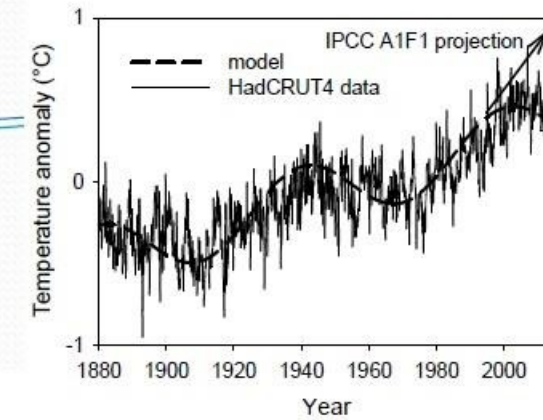
Modèles

Mesures

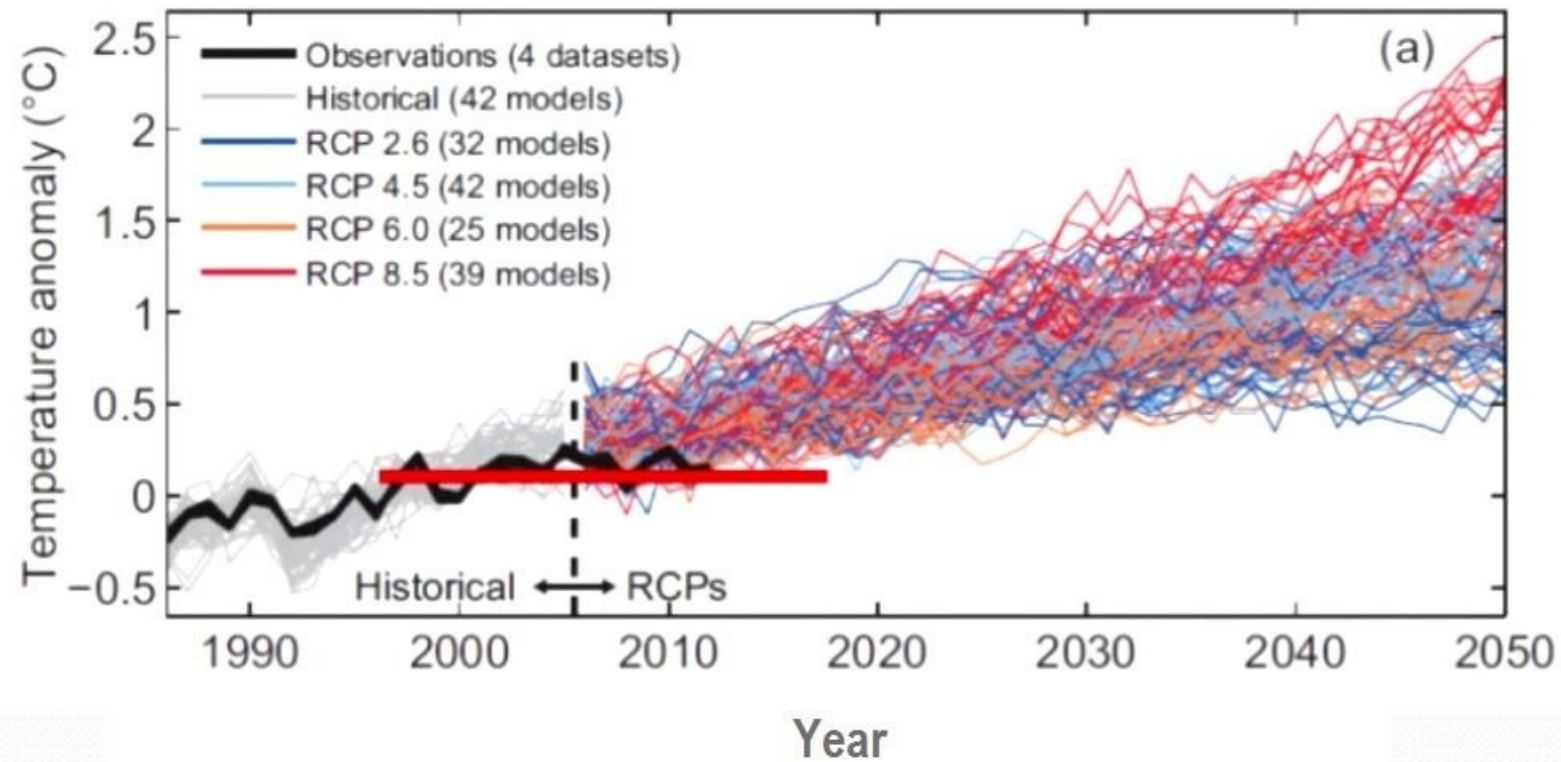
Are the Models validated by the observations?

No! b) Nor by those of the beginning of this century ...

The models do not agree among themselves



Global mean temperature near-term projections relative to 1986–2005



Adapted from presentation of Francois Gervais, Le climat réel valide-t-il les modèles de climat virtuel ? Schiller Institute conference, Paris June 13-14, 2015.